

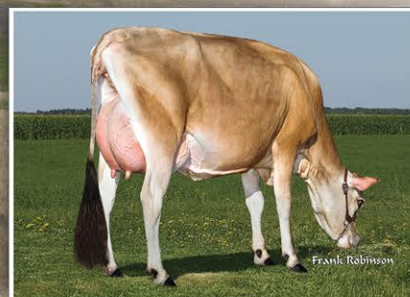
# Persistent PRODUCTION

THE MATRIARCH OF THE BREED'S MOST POPULAR GENOMIC FAMILY.



### D&E Paramount Violet, 90%

5-2 305 3x 27,600 4.2% 1,167 3.5% 952  
36 sons in A.I. with eight ranked among  
the top 20 of the Active A.I. list  
Owned by David Allen, WI



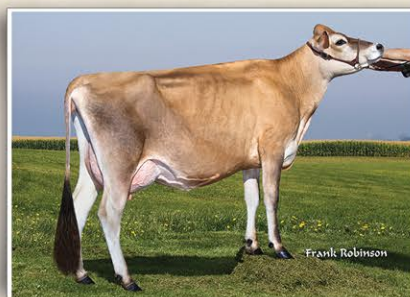
### D&E Headline Violet 50004-ET, 83%

1-9 305 18,490 4.6% 851 3.3% 611



### D&E Headline Violet 50002-ET, 83%

2-7 305 19,590 4.9% 955 3.6% 696



### D&E Merchant Violet 50010-ET, 85%

2-10 305 21,240 5.3% 1,135 3.6% 760

## D&E Abe Violet, 90%

1-8	305	15,960	4.5%	718	3.5%	558	100DCR
3-3	305	20,980	4.8%	1,003	3.7%	768	97DCR
4-7	283	19,800	4.9%	965	3.7%	730	98DCR
5-6	292	20,170	4.8%	959	3.7%	737	101DCR
6-6	305	22,060	4.2%	923	3.6%	791	99DCR

- 311 total direct maternal female descendants (74 of her own daughters) spanning five generations forward
- 70 of her 74 daughters have been genotyped with 46 of them having production data from one to three lactations
- 250 registered male progeny from five generations. Seven of her 42 sons have gone to A.I. including 11JE1133 MEGAVIOLET and 29JE3780 VALERO

"Abe Violet's" maternal line has been bred by the Sherman family since 1944, going back 15 generations. The dam of this 15<sup>th</sup> generation was purchased from the herd of Guy Miller, Modesto, California, 1948 AJCC Master Breeder honoree.

Show your confidence in "Abe Violet" by letting her have your vote in the 2015 Great Cow Contest!

Visit us on the web at <http://avilanche.usjersey.com>

## D & E JERSEYS

The Donald S. Sherman Family  
Elsa Sherman and Wyatt Taylor  
Benny Rector, Director of Marketing • 209/495-8312  
Email: [rjfwest@hotmail.com](mailto:rjfwest@hotmail.com)



[www.facebook.com/thehappiestcows](http://www.facebook.com/thehappiestcows)



## AVI-LANCHE JERSEYS

Richard, Jennifer, Sidney and Caitlin Avila  
13390 U.S. Hwy. 385, Dalhart, Texas 79022  
Alex Steer, Dairy Herd Manager • 806/884-9072 • Email: [steer@vt.edu](mailto:steer@vt.edu)