



# She takes the Prize!

A true production cow who transmits generation after generation.

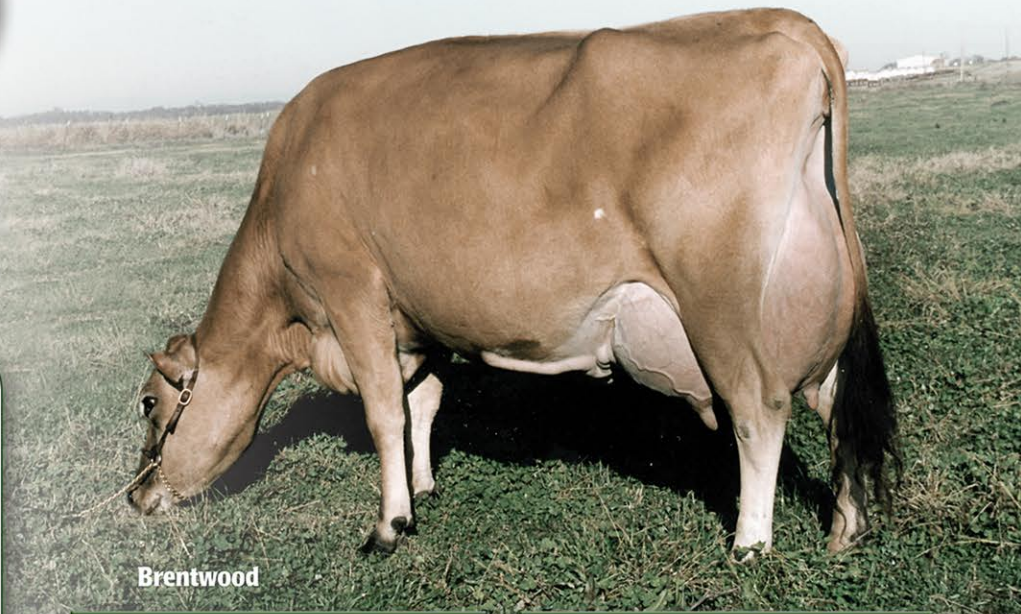
## BW Berretta Prize G525, E-92%

3-1 305 25,570 4.0% 1,014 3.7% 936  
GJPI +62 1<sup>st</sup> for JPI among cows born in 1992  
CDCB: GPTA 12/14

"That's what a Jersey cow should look like," were my comments the day I first saw BW Berretta Prize. I was looking at a pure dairy cow that was so beautifully balanced with everything in proportion... My parting comments were: "This is the cow you need to breed from Bob."

I was smitten with BW Berretta Prize and through the years it's been a joy to watch her offspring and their descendants develop and have such a positive impact on the breed.

Larry A Schirm, ABS Asia Business Director



Brentwood



Brentwood



Brentwood

We hit the jackpot when we flushed "Berretta Prize" to Bancrest Lester Avery.

"Suzanne," "Katie" and "Country" are all flush littermates.

**BW Country-ET** Former #1 JPI sire  
6,813 daughters in 1,137 herds CDCB: GPTA 12/14

We are still milking about 30 "Country" daughters in the herd today.

"Prize" is backed by three dams ranked 1<sup>st</sup> or 2<sup>nd</sup> for JPI or PTA Milk among cows in their birth year:

**BW Lyndon E47**, 1<sup>st</sup> for JPI among cows born in 1989 CDCB: PTA 8/08; **BW Bernard A611**, 2<sup>nd</sup> for PTA Milk in her class for all cows born in 1985 USDA: PTA 8/08; and **BW Duke J20**, 1<sup>st</sup> for PTA Milk in her class for all cows born in 1983 USDA: PTA 8/08

Cast your vote for 'Prize' today!

## BW Avery Suzanne ET119-ET, E-90%

2-11 365 28,140 5.0% 1,395 3.3% 942  
GJPI +82 Ranks 1<sup>st</sup> for JPI among cows born in 1999 CDCB: GPTA 12/14

- 82 registered progeny to date
- 4 sons in A.I. including: **FASTRACK**
- Her daughter, "Centurion Peggy," E-92%, Ranks 1<sup>st</sup> for JPI among cows born in 2001 CDCB: GPTA 12/14

## BW Avery Katie ET121-ET, E-93%

6-6 365 3x 36,530 4.8% 1,747 3.2% 1,172  
GJPI +110 Ranks 1<sup>st</sup> for JPI among cows born in 1999 USDA: PTA 8/08

- 124 registered progeny to date
- 17 sons in A.I. including: **ACADEMY**, Donated to raise funds for Jersey Youth Academy and was syndicated at the 2008 All American for \$96,125.

## Our 6 bulls from this family doing well in A.I.

NAME	THE GOLD STANDARD									
	NAAB Code	JPI	JUI	PTAT	Milk	Fat	PRO	DPR	FA	JH1
BW Citation A	7J1348	194	30.6	1.8	830	43	26	0.8	0.4	F
BW Reporter	203J1423	172	19	1.5	1,316	49	39	-1.1	0.1	F
BW Summit	29J3957	187	14.5	1.3	1,247	45	37	0.1	0.2	C
BW Done Right	29J3956	198	24.4	1.1	1,314	26	27	2.3	-0.4	F
BW Fastrack	7J1190	188	17.2	1.1	553	52	31	0.7	0.2	F
BW Sovereign	7J1412	193	14.2	1.5	975	56	38	0.6	0.4	F
6 SIREs: Average		188.67	19.98	1.38	1,039	45.17	33.00	0.57	0.15	83%

# Brentwood Farms

Bob & Pam Bignami & Family

24540 Clark Ave., Orland, CA 95963

530/865-5612 office • 530/865-3001 fax • <http://www.brentwoodfarms.com>

Bob: 530/519-5612 bob@brentwoodfarms.com • Dairy Manager, Dan Upchurch 530/228-2259

