

MAKING A BIG IMPACT in our herd & the breed!



Our nominations to the 2015 Great Cow Contest:

Coelhos Sooner Sadie, E-90%

5-8 305 23,750 4.0% 939 3.4% 800 DHIR

We are now into the ninth generation in our herd. Of these descendants, 228 have entered the milking herd. She was purchased at the 1991 Pride of the West Sale.

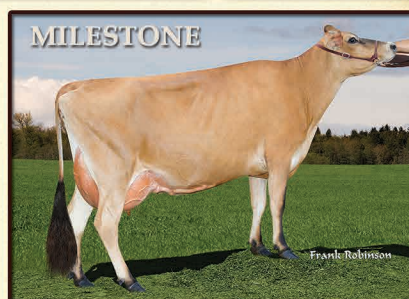
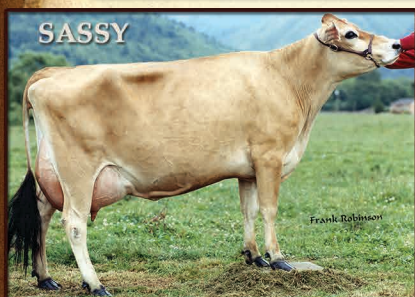
- 39 have been appraised Excellent and 143 Very Good
 - 34 have produced over 20,000 lbs. milk
 - 11 cows and 15 heifers rank on their corresponding Top 1.5% GJPI/JPI lists
 - 25 bulls from this family have gone to A.I. including 200JE520 SYRIOUS, who was syndicated at the 2012 All American Jersey Sale

Quicksilver Many Merrit, E-92%

5-2 365 22,840 4.5% 1,025 DHIR

Our most prominent cow family by far, with over 752 milking descendants. We are currently milking the 12th generation. "Merrit" was purchased at the 1977 Western National Heifer Sale.

- 99 have been appraised Excellent and 550 Very Good
 - 159 have produced over 20,000 lbs. milk
 - 22 cows and 22 heifers rank on their corresponding Top 1.5% GJPI/JPI list
- 64 bulls from this family have gone to A.I. including "Mor," "Max" and the #2 Active A.I. bull 523JE927 MAGNUM



Wilsonview Mitchell Sassy, E-92%

6-11 305 25,500 3.5% 881 3.2% 808

The highest milk record from this family

Wilsonview Impulse Shauna, E-94%

6-6 305 21,530 5.0% 1,084 3.8% 821

The highest appraised cow from this family

GR Wilsonview Garden Sochi-ET, E-91%

5-0 305 24,090 5.0% 1,201 3.3% 788

Ranks on the Top 1.5% GJPI Cow List

Daughter of "Shauna"

Wilsonview Sambo Maggie Lynn-ET, E-94%

5-8 305 24,160 4.9% 1,177 3.8% 910

The highest appraised cow from this family

Impulsive Moment at Wilsonview-ET, VG-88%

6-0 305 26,970 4.0% 1,087 3.3% 891

The highest record from this family in our herd

Wilsonview Tbone Milestone-ET, VG-86%

3-6 305 20,290 4.4% 896 3.7% 747

Ranks on the Top 1.5% GJPI Cow List

Daughter of "Moment"

A nice combination

Our highest GJPI heifer:

Wilsonview Magnum Sabrina-ET, P9

+1,351M +81F +46P +\$649CM +5.7PL

GJPI +238 CDCB: GP1A 1/15 69% JHIF

A MAGNUM granddaughter of "GR SOCHI"

Wilsonview Dairy, Inc.

THE JOSI FAMILY

Visit us online at: <http://wilsonview.usjersey.com>

2540 Olsen Rd. North, Tillamook, OR 97141
503/842-4516 (Don) 503/812-2149 (Derrick)
Email: josi@embarqmail.com

